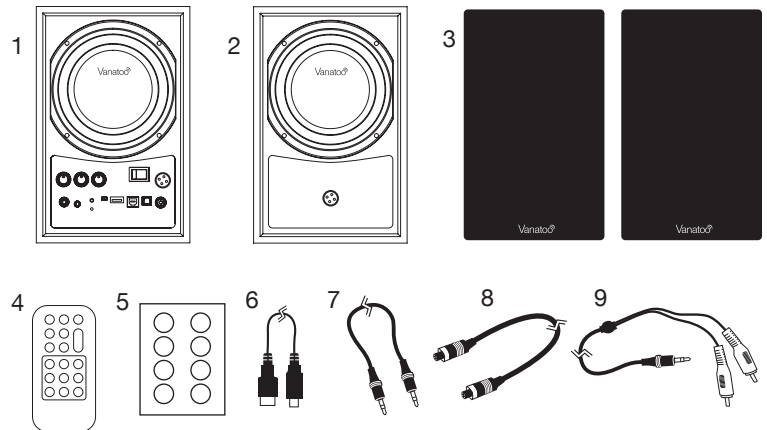


Quick Start Guide

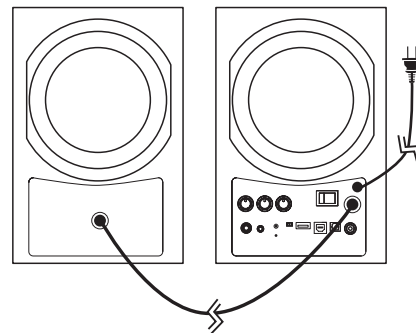
1 Unpack Your System

- | | |
|----------------------------|--|
| 1) Active speaker | 7) 3.5 mm to 3.5 mm cable |
| 2) Passive speaker | 8) Four conductor speaker wire |
| 3) 2 Grills | 9) 3.5 mm to RCA "Y" cable |
| 4) IR remote control | 10) Quick Start Guide and a Safety Sheet |
| 5) Optional isolation feet | |
| 6) USB A to USB B cable | |



2 Connect the Speakers

The included speaker interconnect cable with screw-on collar connectors makes this quick and easy.



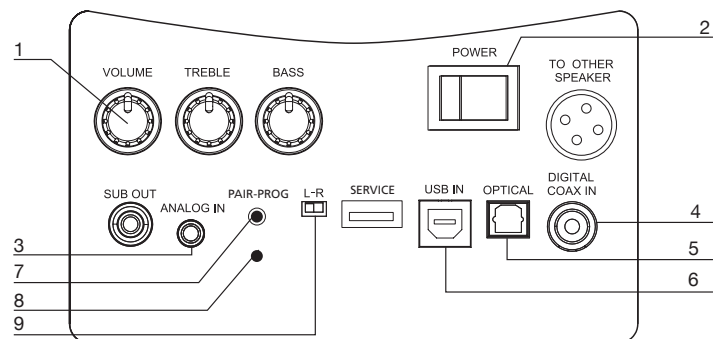
3 Connect Power

1. Make sure the power switch (2) is in the **OFF** position.
2. Plug the AC power cord into the power outlet.

4 Connect Your Audio Source

Turn the volume controls on the speaker (1) and on the audio source both to minimum.

1. Analog (3) — Connect your source using the included using 3.5mm to 3.5mm cable or 3.5mm to RCA cable as appropriate for your source component.
2. Digital Coax (4) — Connect your source component using a 75 ohm digital coaxial RCA cable.
3. Optical (5) — Connect your source component to the Vanatoo T1E using a Toslink optical cable.
4. USB (6) — Connect your computer to the T1E using the supplied USB A to USB B cable. Select the Vanatoo T1E in your computer's audio settings.
5. Bluetooth —
 - a. Press and release the "Pair-Prog" button (7) on the rear of the active speaker, or press "Enable" and then "BT Pair" on the remote control.
 - b. Ensure Bluetooth is turned-on on your source device and pair with the Vanatoo T1E.
 - c. Ensure your source device is connected to the Vanatoo T1E over Bluetooth and play music!

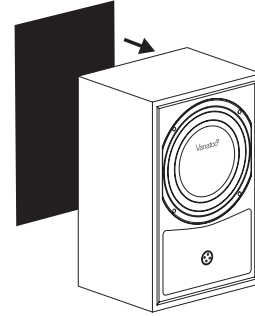


5 Designate Left-Right speaker

Set the Left-Right switch (9) to designate whether the active speaker is located to your right or left (as you face the speakers). This ensures the music is recreated as it was recorded.

6 Install the Grills

Grills come in individual plastic bags. Simple magnetic mounting (no or little alignment necessary). Can go either way such that the “Vanatoo” logo is upright on the bottom.



7 Listen to Music!

Turn the power switch to the **ON** position (2). The blue LED (9) will light up within 5 seconds to indicate power to the unit. In most applications you can set the T1E volume control to 100% and adjust the volume up/down from your source (Computer, Bluetooth device, etc).

8 Remote Control

The included IR Remote Control is especially handy when your T1E's are used with a TV, or for switching sources, adjusting bass and treble, etc. Note that you must hit the “Enable” button to enable the other buttons inside the rectangular box for 15 seconds.

9 Optional Settings

The T1E has a lot of setup options, such as enabling the speakers to play mono, disabling sleep mode, varying the LED brightness, connecting a subwoofer and alternate bass profiles for room placement. Go to www.vanatoo.com/support/downloads to download the user manual for a full description of the T1E and its setup options.

CONGRATULATIONS!! That's it! We hope you enjoy your Vanatoo Transparent One Encore powered speakers.

For additional setup up information, connectivity options, and the troubleshooting guide, check out the Transparent One Encore Owner's Guide or visit us at www.vanatoo.com.

Contact Us

Email: support@vanatoo.com