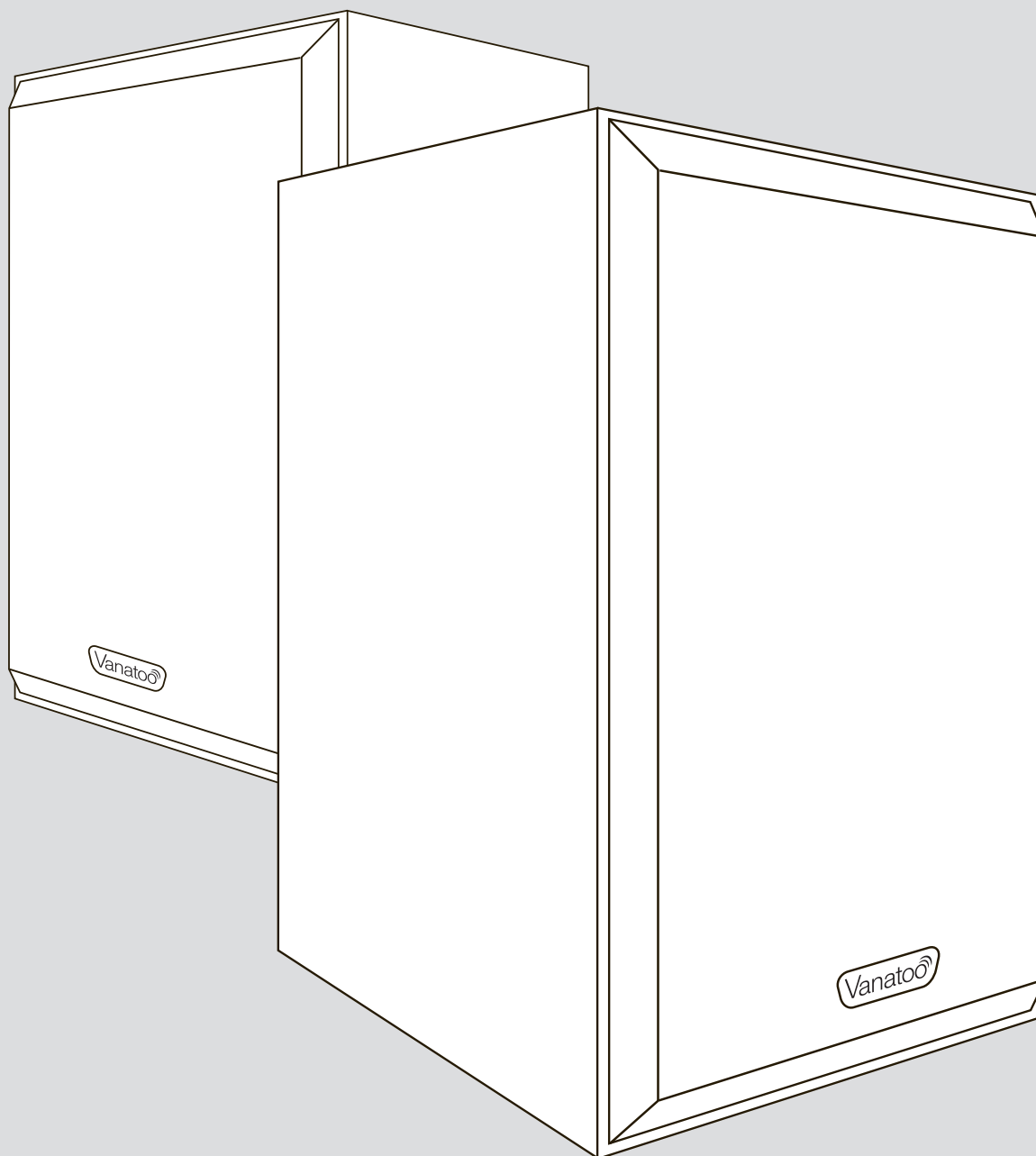


VANATOO® TRANSPARENT ONE ENCORE *PLUS*™
POWERED SPEAKERS

Owner's Guide



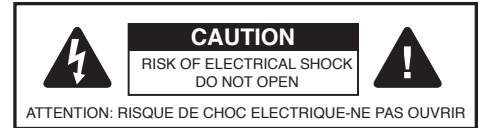
Vanatoo™
Technology Serving Art

CONTENTS

Important Care and Safety Information.....	3
Welcome.....	4
About Your Speakers.....	4
Unpacking your Speakers.....	5
Setting Up Your System.....	6-7
Customize Configuration Settings.....	8-9
Remote Control.....	10
Grills.....	11
Connecting to an optional subwoofer.....	11
Connecting to a Bluetooth device.....	11
Adjusting treble and bass.....	12
Adjusting the Brightness of the Power On LED.....	12
Music Source Precedence.....	12
Troubleshooting.....	13
Warranty.....	14
FCC Compliance Statement.....	14
Contact Vanatoo.....	14

SAFETY PRECAUTIONS

PRÉCAUTIONS DE SÉCURITÉ



1. This lightning flash with arrowhead symbol within an equilateral triangle is intended to alert the user to the presence of non-insulated "dangerous voltage" within the product's enclosure that may be of sufficient magnitude to constitute a risk of electric shock.
 - Warning: To reduce the risk of electric shock, do not remove cover (or back) as there are no user serviceable parts inside. Refer servicing to qualified personnel.
 - The exclamation point within an equilateral triangle is intended to alert the user to the presence of important operating and maintenance instructions in the literature accompanying the appliance.
2. To prevent risk of fire or electric shock, avoid overloading the wall outlet or extension cords.
3. **WARNING:** To reduce the risk of fire or electric shock, do not expose this apparatus to rain or moisture. The apparatus shall not be exposed to dripping or splashing and that objects filled with liquids, such as vases, shall not be placed on apparatus.
4. Read these instructions.
5. Keep these instructions.
6. Heed all warnings.
7. Follow all instructions.
8. Do not use this apparatus near water.
9. Clean only with dry cloth.
10. Do not block any ventilation openings. Install in accordance with the manufacture's instructions.
11. Do not install near any heat sources such as radiators, heat registers, stoves, or other apparatus (including amplifiers) that produce heat.
12. Do not defeat the safety purpose of the polarized or grounding plug. A polarized plug has two blades with one wider than the other. A grounding plug has two blades and a third grounding prong. The wide blade or the third prong is provided for your safety. If the provided plug does not fit into your outlet, consult an electrician for replacement of the obsolete outlet.
13. Protect the power cord from being walked on or pinched particularly at the plugs, convenience receptacles, and at the point where they exit from the apparatus.
14. Use only attachments/accessories specified by the manufacturer.
15. Use only with the cart, stand, tripod, bracket, or table specified by the manufacturer, or sold with the apparatus. When a cart or rack is used, use caution when moving the cart/apparatus combination to avoid injury from tip-over.
16. Unplug the apparatus during lightning storms or when unused for long periods of time.
17. Refer all servicing to qualified personnel. Servicing is required when the apparatus has been damaged in any way, such as when power supply cord or plug is damaged, when liquid has been spilled or objects have fallen into the apparatus, or when the apparatus has been exposed to rain or moisture, does not operate normally, or has been dropped.
18. **WARNING:** The mains plug/appliance coupler is used as the disconnect device. The disconnect device shall remain readily operable.
19. The woofer cone and tweeter dome are fragile. Do not touch.



1. Le symbole de l'éclair à pointe de flèche inscrit dans un triangle équilatéral est destiné à informer l'utilisateur de la présence, dans le boîtier du produit, d'une "tension dangereuse" non isolée d'une importance suffisante pour constituer un risque d'électrocution.
 - Avertissement : Afin de réduire les risques d'électrocution, ne retirez pas le couvercle (ou le dos) de l'appareil, celui-ci ne contenant aucune pièce réparable par l'utilisateur. Pour toute réparation, veuillez faire appel à un personnel qualifié.
 - Le point d'exclamation inscrit dans un triangle est destiné à informer l'utilisateur de la présence, dans le manuel accompagnant l'appareil, d'importantes instructions concernant le fonctionnement et l'entretien.
2. Pour empêcher le risque d'incendie ou de décharge électrique, évitez d'excéder la capacité normale de la prise de courant ou des cordons électriques.
3. **AVERTISSEMENT :** Pour réduire les risques d'incendie ou d'électrocution, n'exposez pas cet appareil à la pluie ou à l'humidité. L'appareil ne doit pas être exposé à des gouttes ou à des éclaboussures. Veuillez à ne pas poser sur l'appareil des objets remplis de liquide tels que des vases.
4. Lisez ces instructions.
5. Conservez ces instructions.
6. Respectez tous les avertissements.
7. Suivez toutes les instructions.
8. N'utilisez pas cet appareil à proximité d'une source d'eau.
9. Nettoyez l'appareil uniquement avec un chiffon sec.
10. N'obstruez aucun orifice de ventilation. Installez l'appareil selon les instructions du fabricant.
11. N'installez pas l'appareil près d'une source de chaleur comme des radiateurs, bouches de chaleur, cuisinières ou autres appareils (y compris les amplificateurs) dégageant de la chaleur.
12. Ne modifiez pas le connecteur polarisé ou la mise à la terre. Un connecteur polarisé est doté d'une lame plus large que l'autre. Un connecteur avec mise à la terre est doté de deux broches semblables et d'une troisième différente. Cette lame large, ou troisième broche, est conçue pour assurer votre sécurité. Si le connecteur fourni ne convient pas à votre prise, consultez un électricien pour qu'il procède au remplacement de votre prise.
13. Protégez le cordon d'alimentation pour éviter de marcher dessus ou de le pincer, particulièrement aux points des fiches, des prises et de sortie de l'appareil.
14. Utilisez uniquement des accessoires ou options recommandés par le fabricant.
15. Utilisez uniquement un meuble sur roulettes, un support, un trépied, une étagère ou une table d'un type recommandé par le fabricant ou vendu(e) avec l'appareil. Si vous utilisez un meuble sur roulettes, veillez à le déplacer avec précaution afin d'éviter tout accident corporel si l'équipement se renversait.
16. Débranchez l'appareil pendant les orages ou s'il doit rester inutilisé pendant une période prolongée.
17. Pour toute réparation, faites appel à un personnel qualifié. Une réparation sera nécessaire si l'appareil a subi des dommages tels que détérioration du cordon d'alimentation ou de la fiche, liquide renversé sur l'appareil, ou encore si un objet est tombé dessus, si l'appareil a été exposé à la pluie ou à l'humidité, s'il ne fonctionne pas correctement ou s'il a fait une chute.
18. **AVERTISSEMENT :** La fiche du cordon d'alimentation de l'appareil fait office d'interrupteur d'alimentation. À ce titre, elle doit demeurer accessible à tout moment.
19. Le woofer à cône et le tweeter à dôme sont fragiles. Ne les touchez pas.



WELCOME!

Thank you for choosing Vanatoo Transparent One Encore Plus powered speakers. We hope you'll enjoy them for years to come. We've worked hard to design a bookshelf size speaker that delivers impressive bass, amazing sound clarity, and a rich set of features for today's home audio environments. Now, all that's between you and a great listening experience is the short time it takes to set up your speakers and plug in your favorite audio source. If you have any questions, don't hesitate to contact us directly, or visit our website at vanatoo.com for additional tips and information.

The Vanatoo Team

ABOUT YOUR SPEAKERS

Your Vanatoo Transparent One Encore *Plus* powered speakers use high quality components and state of the art digital technology to deliver excellent sound reproduction. Its five audio source input options let you connect to a wide variety of audio devices and popular home audio networks. The Transparent One Encore *Plus* system consists of a passive speaker, which contains the traditional speaker components, and an active speaker, which is also home to an integrated two channel bi-amped, high efficiency digital amplifier, power supply, and controls.

Primary features of Vanatoo Transparent One Encore *Plus* powered speakers include:

- 4 digital input options: TOSLINK® optical, Coax, and audio USB
- Wireless Bluetooth interface with aptX, aptX-HD, AAC, and a range of about 30 feet
- 3.5 mm analog input
- D2Audio® integrated bi-amped Class D amplifier
- Integrated digital signal processor
- Patented XBL™ 5 ¼ inch aluminum woofer
- 1 inch aluminum dome tweeter with wave guide
- 5 ¼ inch passive radiator
- Volume, bass and treble controls
- Left/Right switch to define the position of the active speaker
- Automatic low power sleep mode
- Optional subwoofer output
- Automatic subwoofer crossover implementation
- Set of magnetically attached grills
- USB charging and program download port
- Remote control
- Customizable speaker configurations
- ¾ inch MDF cabinet construction

(continued next page)

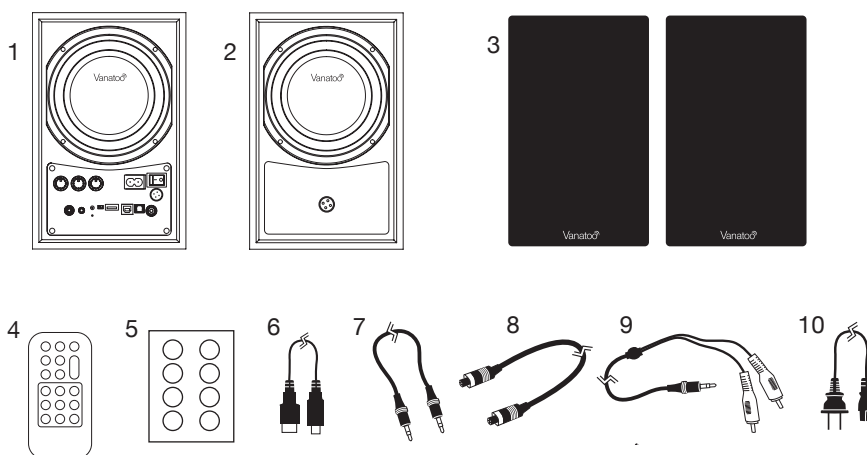
Product Specifications

Power output	2 amplifiers at 100 watts for woofers 2 amplifiers at 12 watts for tweeters
Amplifier type	Class D
Coax/Optical inputs	S/PDIF; Max sample rate of 96K at 24 bits
Audio USB input	Max sample rate of 96K at 24 bits
DSP resolution	48K at 24 bits
AC Voltage in	120 VAC±10% at 60Hz or 220 VAC±10% at 50Hz
USB Service Port	5VDC at 2A
Sleep Mode Power	0.5 watts
Idle Power (not asleep and not playing)	13 watts
Protection	thermal, short circuit, & over current output protection
Weight	Active: 12 lbs / Passive: 11 lbs
Dimensions—passive speaker	10" H x 6 1/2" W x 7 1/2" D
Dimensions—active speaker (includes adjustment knobs)	10" H x 6 1/2" W x 8 1/8" D
Shipping weight	29 lbs
Shipping dimensions	16" H x 18" W x 12" D

UNPACKING YOUR SPEAKERS

When unpacking your speakers, inspect them to make sure that there is no visible damage due to shipping. If you see damage, please contact us immediately. Please check to make sure your shipment contains one of each of the following items:

- 1) Active speaker
- 2) Passive speaker
- 3) 2 Grills
- 4) IR remote control
- 5) Optional isolation feet
- 6) USB A to USB B cable
- 7) 3.5 mm to 3.5 mm cable
- 8) Four conductor speaker wire
- 9) 3.5 mm to RCA "Y" cable
- 10) Power Cord
- 11) Quick Start Guide and a Safety Sheet

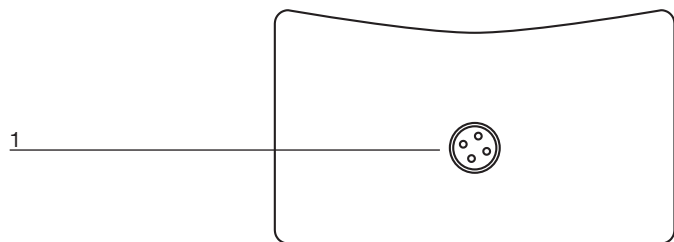


⚠ DO NOT discard shipping materials.
In the rare case that you must return the speakers, they will need to be shipped in the original packaging. The shipping box is collapsible for storage.

SETTING UP YOUR SYSTEM

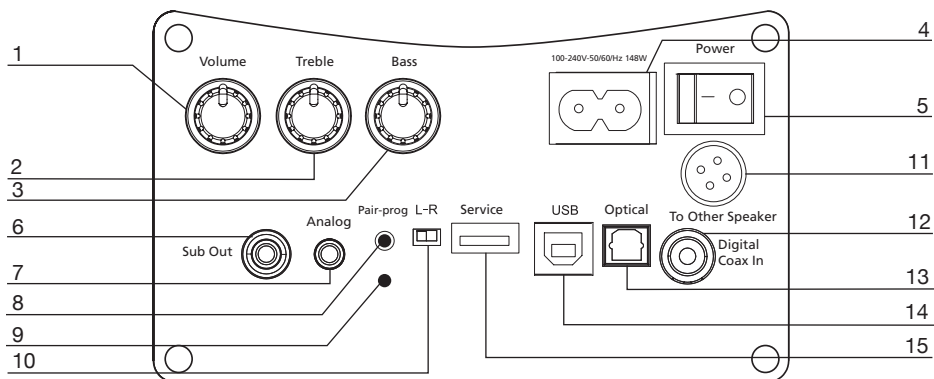
You may have noticed the absence of a registration card. You are not required to register your speakers. However, if you want us to send you updates or information on future products, you'll want to register as a Vanatoo customer at our website at vanatoo.com.

Passive Speaker Back Plate Overview



#	Feature	Description
1	SPEAKER INPUT CONNECTOR	Passive speaker INPUT connector. Connect this connector to the amplifier OUTPUT connector (7) on the active speaker using the speaker wire provided.

Active Speaker Back Plate Overview



#	Feature	Description
1	VOLUME	Use to set the volume level that works best with your audio device. It is meant to be set once then forgotten. The day-to-day volume control should be accomplished via your audio device or remote control.
2	TREBLE	Treble control to adjust the system's treble response to best match your speaker placement and space.
3	BASS	Bass control to adjust the system's bass response to best match your speaker placement and space.
4	POWER CONNECTOR	Connect the provided power cable to this connector.
5	POWER On/Off	Use to power the speaker system on or off. If the system is left in the ON position with no activity, and no sound is being sent to the speaker system, the system will go into a sleep mode.
6	SUB OUT	Line level output for an optional powered subwoofer.
7	ANALOG IN	Analog input for a 3.5 mm (sometimes called an 1/8 inch) stereo plug.
8	PAIR-PROG	Places the Bluetooth receiver in pair mode. Also used to program speaker setup configurations.
9	Blue power LED	When lit, this indicates the speaker system is switched on.
10	L-R switch	Used to select where active speaker is located as you face the speakers. L= left side, R=right side.
11	TO OTHER SPEAKER	Amplifier OUTPUT connector to connect the active speaker's internal amplifier to the passive speaker.
12	DIGITAL COAX IN	Digital S/PDIF input for a coax connection.
13	OPTICAL	Digital S/PDIF input for a TOSLINK fiber optic plug.
14	USB IN	Digital Audio USB input for a standard USB type B plug.
15	USB SERVICE CONNECTOR	Use to charge any device that uses a USB port for charging up to 2A. Also used to download software updates.

(continued next page)

Step 1: Connect the active speaker to the passive speaker

The included speaker with the modular 4 conductor connectors makes this connection simple and quick.

Step 2: Connect the active speaker to the power outlet

1. Make sure the power switch (5) is in the **OFF** position.
2. Plug the end of the AC power cord to the active speaker and the other end into the power outlet

Step 3: Connect the active speaker to your audio device

1. Turn the volume control (1) on the speaker and audio device down to minimum.
2. Find the correct input connector for your audio device on the active speaker back panel (7, 12, 13, or 14). Connect the device using the appropriate cable and turn it on.
3. Turn the power switch to the **ON** position (5). The blue LED (9) will light up within 5 seconds to indicate power to the unit.

TIP If you are using a wireless network device, or connecting to a computer using the USB port, there may be additional setup necessary on your audio source. Consult the device manufacturer for setup instructions.

TIP While adding or removing cables with the power on won't damage your speakers, we recommend that you turn them off first.

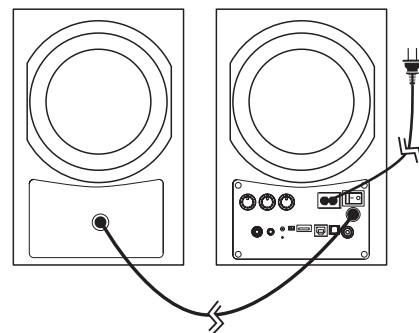
Step 4: Optimize for your space

Vanatoo knows each customer's environment and listening preferences are different. Transparent One Encore *Plus* speakers have bass, treble, balance, and volume adjustments, and allow you to choose whether the active speaker is in the left or right position.

1. Locate the L-R switch (10) on the back of the active speaker.
2. Set the switch to designate whether the active speaker is the speaker on your left (L) or right (R) when you are facing both of the speakers from the front.
3. Turn the audio source device volume up to $\frac{3}{4}$ to full.
4. Turn the active speaker volume knob (1) up to the maximum volume you desire.
5. This should provide a good volume combination so that, in the future, you should only need to adjust the volume control on your audio device to achieve your desired listening volume. Adjust the volume combination down if your settings cause distortion. As with all speakers, prolonged distortion can cause permanent damage.
6. Rotate the treble (2) and bass (3) controls to adjust the tone as desired. In most cases, the optimum setting for a flat frequency response is to set the treble and bass knobs at the detents (straight up position). This is our default setting.

Step 5: Enjoy!

That's It! You are ready to enjoy your Vanatoo Transparent One Encore *Plus* speakers. Congratulations and happy listening.



CUSTOMIZE CONFIGURATION SETTINGS

Nine settings can be customized on the T1E+.

Sleep Mode setting—These settings allow the T1E+ to be configured so that it will either go to sleep after 20 minutes of no audio inputs or to never go into the sleep mode. In the sleep mode the T1E+ consumes less than 0.5 watts of power. When music is sent to a sleeping T1E+ it takes about 3 seconds for the amplifier to transition out of sleep mode and start playing music. If the T1E+ is in idle mode (not in sleep but not playing music) it draws about 13 watts of power. When music is sent to an idle T1E+ the music starts playing almost immediately.

Remote Enable Key setting—By default the remote's "Enable" key must be pressed before any of the other keys in the rectangular box on the remote will work. This is to keep the user from accidentally bumping a button and unknowingly changing the settings. The user has 15 seconds to use the buttons in the box (BT Pair, Treble, Bass) before the "Enable" key must be used again. The optional configuration extends the "Enable" key behavior beyond the buttons in the box to include the source selection buttons. This is to protect against accidentally switching the source.

DSP setting—The default "Shelved" DSP setting should be used when you are placing the speakers on a desktop or near a wall or corner of your room. If you connect a subwoofer to the T1E+ with the Shelved DSP setting selected, the crossover to the subwoofer is set at 125 Hz. A T1E+ set to the Shelved DSP setting with a subwoofer connected is the configuration which will result in the loudest possible music from the T1E+.

The optional "Flat" DSP setting should be used when you are placing the speakers on stands at least two feet away from any wall or if you are using the T1E+ as studio monitors. If you connect a subwoofer to the T1E+ with the Flat DSP setting selected, the crossover to the subwoofer is set at 80 Hz.

Stereo/Mono setting—Setting the T1E+ to the default Stereo mode will give you true left/right stereo output. If you set the T1E+ to the optional Mono mode the input's left and right channels are summed together and the same content is output to both speakers. Use the Mono mode if you want to take just the active speaker with you to the garage to work on your car but don't want to bother taking both speakers. Just set the T1E+ to mono mode, plug in the active speaker into power, and push music to the speaker with your Bluetooth on your phone. If you want to include your passive speaker in the Mono mode that's OK too.

Auto Input Switch setting—In the default setting when the T1E+ goes to sleep it will automatically reset the input selection to the Auto Input Switch mode. This way if someone in your family uses the remote control to select a specific input then an hour later you walk in the room you will always know that sending music on any input will bring the unit out of sleep mode and your music will play. Most people should leave the T1E+ in this setting.

In the optional setting when the T1E+ goes to sleep it will not change the input selection. To bring the T1E+ out of sleep mode the user must play music on the last input selected or hit any key on the remote to bring the T1E+ out of sleep mode then select the desired input. This is probably a less frequently used setting but some users may find it useful in a controlled environment.

Limiters setting—In the default setting the T1E+ DSP incorporates limiters (sometimes called compressors). They are turned-on by default in the T1E+ to both increase the maximum playback volume and reduce the peak power draw of the system. When the system is played at full volume with heavy bass demands and the limiter turned off, it is possible to trigger the protection circuit resulting in a temporary shutdown. This is OK, as the circuit is behaving exactly as intended, but may be annoying. The default of the limiters "Enabled" greatly reduces the chances of this happening. The limiter can however have a negative effect on the sound at high volumes, and some users may find the sound more "open" with the limiters disabled. We let you, the user, decide. Just note that the maximum volume with the limiter "Disabled" will be a little lower, and if the protection circuit trips you'll need to turn it down a little!

Bluetooth Enable setting—The Bluetooth interface is enabled by default. Optionally, you can disable the Bluetooth interface so that the Bluetooth radio is turned off.

Bluetooth Pairing Time setting—By default, the Bluetooth interface will be placed in pairing mode for 2 minutes after power up. You can also place the unit in pairing mode for 2 minutes by depressing the "Pair-Prog" button on the back of the active unit or depressing the "Enable" key followed by the "BT Pair" key on the remote. Optionally you can set the Bluetooth pairing mode in the always on mode. This will cause the Bluetooth interface to always be in pairing mode providing no device is connected.

USB Service Port Enable setting—The USB Service port can be used to charge compatible devices up to 2.0 amps. By default the charging function will be disabled any time the T1E+ goes into sleep mode. You can change the setting of the T1E+ so that it will not be allowed to sleep if the Service port is being used to charge a device.

Default setting—This setting sets each of the optional settings to their default selections as noted in the default column in the table on page 9.

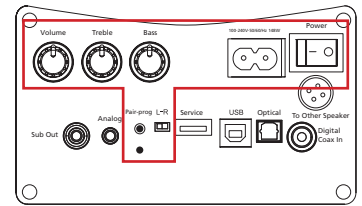
Download new firmware—This setting allows the user to update the T1E+ firmware. Should this become necessary Vanatoo will provide detailed instructions how to accomplish this.

(continued next page)

Customize your settings by using the following knobs and switches; volume, treble, bass, L/R, Prog-Pair, and Power.

Steps to customize settings

1. Power off the T1E+ by switching the power button to the off (or “0”) position.
2. Find the setting you wish to customize in the chart below. Set the volume, treble, bass, and L/R accordingly.
3. While holding the Pair-Prog button down, switch the power button to on (or “1”).
4. When you see the blue power-on blue LED light, release the Pair-Prog button. The power-on blue LED will flash three times to signal the new configuration is set.
5. If you wish to customize another setting, repeat steps 1-4.
Your customized settings(s) will remain when you power off the T1E+.



Default settings

If you reset to the factory defaults, the blue and amber LEDs will flash several times. After the default reset is complete, the power-on blue LED will remain on.

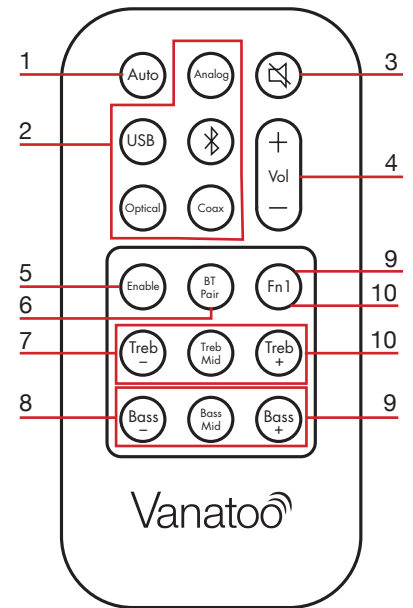
TIP After customizing the speaker configuration settings *be sure to reset the volume, treble, bass and L/R* to the desired runtime settings.

Default Settings	Setting	Volume knob	Treble knob	Bass knob	L/R Sw
X	Enables sleep mode after 20 min	Mid	Min	Min	L
	Disables sleep mode – never sleeps	Mid	Min	Min	R
X	Remote “Enable” key must precede remote BT Pair, Treble, and Bass settings	Max	Min	Min	L
	Remote “Enable” key must precede remote input selection, BT Pair, Treble, and Bass settings	Max	Min	Min	R
X	Enables shelved DSP settings mode	Min	Mid	Min	L
	Enables flat DSP setting mode	Min	Mid	Min	R
X	Stereo output to speaker drivers	Mid	Mid	Min	L
	Mono output to speaker drivers	Mid	Mid	Min	R
X	Reset to Auto Switch mode in sleep	Max	Mid	Min	L
	Retain current input selection in sleep	Max	Mid	Min	R
X	Compressors enabled	Min	Max	Min	L
	Compressors disabled	Min	Max	Min	R
X	Bluetooth enabled	Mid	Max	Min	L
	Bluetooth disabled and never broadcasts	Mid	Max	Min	R
X	Bluetooth in pairing mode for 2 min only if not paired	Max	Max	Min	L
	Bluetooth always in pairing mode if not paired	Max	Max	Min	R
X	USB charging port will turn off in sleep mode	Min	Min	Mid	L
	Sleep mode disabled if USB charging port in use	Min	Min	Mid	R
	Reset settings to factory defaults	Min	Min	Min	L
	Load new firmware from USB drive	Min	Min	Min	R

REMOTE CONTROL

The T1E+ comes with a remote control. You can use this remote to control various functions of the T1E+. In addition, some universal remotes support the Vanatoo remote control commands. Check your universal remote's device compatibility list to see if the Vanatoo products are included.

- 1) **Auto Command**—When the Auto Command is sent the T1E+ amplifier enables the Auto Input Switching algorithm and automatically selects the input to play according to the Auto Input Switching rules.
- 2) **Analog, USB, Bluetooth, Optical Coax Commands**—When either the Analog, USB, Bluetooth, Optical or Coax input selection commands are sent, the T1E+ amplifier will disable the Auto Input Switching algorithm and switch the input to the input that was selected. This provides a means for the user to select an input regardless of the hierarchy of the Auto Input Switch algorithm. However it can result in a user selecting an input that is not receiving music which will result in the speakers being silent. If for example music is being received by the Bluetooth receiver and no music is being received by the optical input, then if the user selects "Optical" from the remote control the result will be that no music will be heard from the speakers.
- 3) **Mute Command**—When the Mute command is sent to the T1E+ the output will be muted. If the amplifier is already muted then it will be unmuted.
- 4) **Vol+ and Vol- Commands**—When the Vol+ or Vol- commands are sent the T1E+ amplifier will either increase or decrease the output volume depending on which key is depressed. If one of the keys is held down the rate at which the volume is changed will accelerate the longer the key is held. If the amplifier is muted when one of the volume commands is sent the amplifier will be unmuted.
- 5) **Enable Command**—When the Enable command is sent the T1E+ amplifier will start an "Enable Key" 15 second countdown timer. During that 15 seconds the amplifier will respond to the BT Pair commands, Treble commands, and Bass commands. Any commands received from the BT Pair, Treble commands, or Bass commands during the 15 seconds will cause the 15 second countdown timer to be reset to 15 seconds and restart the countdown as well as executing the requested action as described below.
- 6) **BT Pair Command**—If the 15 second enable timer is greater than zero, the BT Pair command will force the Bluetooth receiver to the pairing mode. This will also disconnect any devices currently connected to the Bluetooth receiver. Depressing the BT Pair button on the remote also will reset the Enable countdown timer to 15 seconds and restart the countdown.
- 7) **Treb+, Treb Mid, Treb- Commands**—If the 15 second enable timer is greater than zero, the Treb+ or Treb- command will increase or decrease the treble tone control by 1dB. Holding the Treb+ or Treb- remote control key down will not continue to increase or decrease the treble setting by more than 1dB. To move the treble setting more than 1dB the remote control key must be released and depressed again. For example, if the user wants to increase the treble setting by 3dB he must press and release the Treb+ remote button 3 consecutive times. If the 15 second enable timer is greater than zero, the Treb Mid command will set the treble tone control to 0dB. Depressing any of the Treb buttons on the remote will also reset the Enable countdown timer to 15 seconds and restart the countdown.
- 8) **Bass+, Bass Mid, Bass- Commands**—If the 15 second enable timer is greater than zero, the Bass+ or Bass- command will increase or decrease the bass tone control by 1dB. Holding the Bass+ or Bass- remote control key down will not continue to increase or decrease the Bass setting by more than 1dB. To move the bass setting more than 1dB the remote control key must be released and depressed again. For example, if the user wants to increase the bass setting by 3dB he must press and release the Bass+ remote button 3 consecutive times. If the 15 second enable timer is greater than zero, the Bass Mid command will set the bass tone control to 0dB. Depressing any of the Bass buttons on the remote will also reset the Enable countdown timer to 15 seconds and restart the countdown.
- 9) **Subwoofer Output Command**—If the 15 second enable timer is greater than zero, press the Fn1 key followed by the Bass+ or the Bass- to either increase or decrease the subwoofer output level by 1dB. To move the subwoofer level more than 1dB the remote control key must be released and depressed again for each 1dB change. Using this method you can change the subwoofer output level by as much as +/- 10dB. Pressing the Fn1 button followed by the Bass Mid button will reset the subwoofer output level to the default level. Depressing any of the Bass buttons on the remote will also reset the enable countdown time to 15 seconds and restart the countdown.



(continued next page)

- 10) **Left/Right Balance Command**—If the 15 second enable timer is greater than zero, press the Fn1 key followed by the Treb+ or the Treb- to adjust the balance control between the left and right speakers. Pressing the Treb+ key to increase the output of the right speaker. Press the Treb- key to increase the output of the left speaker. To move the balance more than one step the remote control key must be released and depressed again for each step change. Using this method you can change the balance between the left and right speakers. Pressing the Fn1 button followed by the Treb Mid button will reset the balance to the mid-point so that the output of both speakers are equal. Depressing any of the Treb buttons on the remote will also reset the enable countdown time to 15 seconds and restart the countdown.

GRILLS

The grills that are provided with the T1E+ may be installed or not depending on the user's preference. They are magnetically attached to the T1E+'s front baffles so to install them all you have to do is place the grill in the approximate location on T1E+'s front baffle and the magnets will automatically position the grill into its proper position.

CONNECTING TO AN OPTIONAL SUBWOOFER

Vanatoo T1E+ speakers are designed to provide excellent bass at louder than normal listening levels without the need for a subwoofer. However if you are playing very bass heavy music, adding a subwoofer will allow you to play even lower bass and achieve louder overall volume. When a subwoofer is connected, the active speaker automatically detects the connection and adds a digital crossover network between the T1E+ speakers and the subwoofer.

1. Connect to any powered subwoofer using the "SUB OUT" connector on the active speaker to the input of the subwoofer using a cable with RCA connectors on both ends.

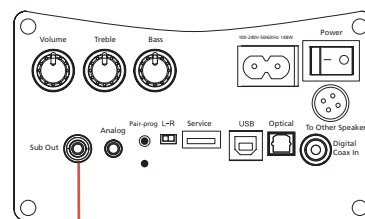
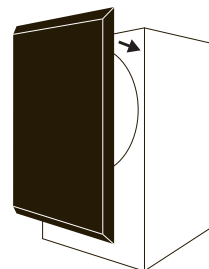
⚠ DO NOT PLUG A 3.5MM CONNECTOR INTO THE SUBWOOFER OUT CONNECTOR. PLUGGING ANY TYPE CONNECTOR OTHER THAN AN RCA CONNECTOR INTO THE SUBWOOFER OUTPUT MAY PERMANENTLY DAMAGE THE SUBWOOFER OUT CONNECTOR.

2. Set the crossover frequency on your subwoofer to its maximum setting or disable the subwoofer crossover.
3. Set the volume control on the subwoofer to desired level.
4. The T1E+ system will automatically set the crossover frequency between the T1E+'s and your subwoofer.

CONNECTING TO A BLUETOOTH DEVICE

The Vanatoo Transparent One Encore Plus has a Bluetooth receiver built into the active speaker. This Bluetooth receiver supports the SBC, aptX, aptX-HD and AAC codecs. Connecting to the T1E+'s Bluetooth receiver is very simple. Once you power up the T1E+ the Bluetooth receiver begins to search for devices to connect for 2 minutes. This is called the Pairing mode. Don't worry, if you don't connect within those two minutes you can force the T1E+ back into the pairing mode for another 2 minutes by either pressing the "Pair-Prog" button on the back of the active speaker or by using the remote and pressing the "Enable" key followed by the "BT Pair" key. When you see "Vanatoo T1EP-xxxx" (where the "xxxx" will be replaced with four alpha-numeric characters) on your source device's list of Bluetooth devices, just select it. The Bluetooth connection will be completed within seconds. You can now play your music wirelessly from your Bluetooth enabled music source. Any time you want to disconnect your device from the T1E+ you can either do that directly on your music source (e.g. iPhone or Android phone), or you can push the "Pair-Prog" button on the back of the T1E+ active speaker, or you can hit "enable" followed by "BT Pair" on the remote.

TIP Only one device can connect to the T1E+ Bluetooth receiver at a time, so if you are having problems connecting make sure no other device in the area is connected. You can force all devices to be disconnected by depressing the "Pair-Prog" button on the back of the T1E+ active speaker, or you can hit "enable" followed by "BT Pair" on the remote. Some devices may auto-connect over Bluetooth, reestablishing their connection even after you terminate it with the T1E+ controls. This can make the Bluetooth unavailable to other devices. If you have trouble pairing or connecting please turn off the Bluetooth on every device in your home except for the one you want to use.



SUB OUT

(continued next page)

If you happen to be using a mobile device to connect to the T1E+'s Bluetooth interface (like an iPhone or Android Phone) and you happen to walk out of range for the Bluetooth receiver your music will stop playing and one of three things will happen when you walk back into range.

1. If you are out of range for only a few seconds the music will stop playing while you are out of range but may begin again automatically once you are back in range.
2. If you are out of range for a minute or so then walk back into range the mobile device may automatically reconnect (or just stay connected) but the music may not automatically begin again. All you need to do is hit play on your mobile device's music player and the music will resume.
3. If you are out of range for more than a minute then walk back into range the mobile device will most likely be disconnected from the T1E+ which will require you to reconnect to the T1E+'s Bluetooth receiver to play music again.

The exact nature of how a mobile device handles the "out of Bluetooth receiver range" issue varies from device to device and from revision to revision. However this is not a complex issue and it can always be resolved by either restarting the music or reconnecting to the T1E+ Bluetooth receiver once the device is back in the Bluetooth receiver's range.

ADJUSTING TREBLE AND BASS

The treble and bass can be adjusted on the T1E+ using the treble and bass knobs located on the back of the T1E+ active speaker. Note that both the treble and bass controls have a detent at the 12 o'clock position. This detent position is the "flat" position for the tone control. You can also adjust treble and bass using the remote.

ADJUSTING THE BRIGHTNESS OF THE POWER ON LED

The intensity of the blue power on LED can be adjusted to taste. In fact it can be turned off completely if you want. To adjust the intensity once the T1E+s are powered up and the blue LED is on and no music is playing, hold the "Pair-Prog" button down for 5 seconds. After the 5 seconds continue to hold the button down (do not release it or you will have to start the 5 seconds over again). Then rotate the volume knob. When you have the blue LED intensity where you like it then release the Pair-Prog button. That's it. No more need of a piece of black electrical tape stuck on the power on LED to keep your bedroom dark. The blue LED will now be at this intensity until you change it.

TIP When you have completed the LED intensity process by releasing the Pair/Prog button remember to readjust your volume knob to your desired listening level. If you adjust your LED intensity to a very low intensity then forget to readjust your volume knob when you are done you might wonder why you can no longer hear your music.

AUDIO MUSIC SOURCE PRECEDENCE

If you have your T1E+ set to auto input switching (this is the default setting) and multiple devices are connected to your T1E+ speakers, the device you hear is automatically selected based on the hierarchy shown below:

1. Analog
2. Audio USB
3. Optical S/PDIF
4. Coax
5. Bluetooth

For example, if the T1E+ is connected to an MP3 player via the 3.5mm analog connection and to a networked audio device via the TOSLINK optical connection, and both are turned on, the MP3 player is the source that will be played. If however, the MP3 player is turned off and the networked audio device is left on, the networked audio device will be the source that is played.

When switching from a higher priority input to a lower priority input, the higher priority input must be OFF (or silent) for 7 seconds before the T1E+ amplifier will switch to the lower priority input. This enables the amplifier to discern between the higher input being turned off and normal inter-track silence thus avoiding switching to the lower priority input between audio tracks. This 7 second wait time is not necessary when switching from a source that is lower in priority to one that is higher. Therefore, switching from a lower priority input to a higher priority input will happen almost immediately.

TROUBLESHOOTING

In the unlikely event that you should experience problems with your Vanatoo Transparent One Encore *Plus* speakers, we have listed a few suggestions that might help you. If these suggestions fail to correct your problem, check our website for additional suggestions or contact our support department at support@vanatoo.com.

Problem	Troubleshooting Steps
Power LED is not illuminated	<ul style="list-style-type: none"> • Make sure the power switch is switched to the “ON” position. • Make sure the AC power cord is properly connected to the household wall outlet. • Make sure the wall outlet you have plugged the power cord into is a “live” outlet. • Make sure the blue LED has not been dimmed to the point that it doesn’t light. • Make sure that the unit is not in the sleep mode.
No sound from either speaker	<ul style="list-style-type: none"> • Make sure the power LED is illuminated. If not, see the steps for “Power LED is not illuminated”. • Make sure the active speaker volume knob is turned up. • Make sure your audio source volume is turned up. • Make sure your audio source is playing audio. • Disconnect all but one audio source input on the active speaker. • If the speaker was previously working properly but stopped suddenly, this may be the result of the output drivers experiencing thermal shutdown. This is a normal protection feature and does not indicate a malfunction. Turn the power off on the active speaker, wait 5 minutes, turn down the volume of the audio source, then turn the speaker system back on. • If possible, try different inputs on the active speaker to see if one works where another may not. • Select “auto” with the remote.
Sound from active speaker but not from passive speaker	<ul style="list-style-type: none"> • Make sure the 4 pin cable is properly connected to the active and passive speakers. • If you are using the analog input, make sure the 3.5mm connector is firmly seated into the connector input on the active speaker and the audio source. • If you are using the 3.5mm to RCA “Y” cable, make sure both of the RCA connectors are properly seated. • Make sure the balance control on your source device (like your computer) is set to the mid point.
Sound from passive speaker but not from active speaker	<ul style="list-style-type: none"> • If you are using the analog input, make sure the 3.5mm connector is firmly seated into the connector input on the active speaker and the audio source. • If you are using the 3.5mm to RCA “Y” cable, make sure both of the RCA connectors are properly seated. • Make sure that any balance control on your source (like a computer) is set to the mid-point.
Audio is distorted	<ul style="list-style-type: none"> • If you are using the analog input (3.5 mm connector) make sure you are not overdriving the audio input. Turn down the volume on your audio source device and, if necessary, turn up the volume on the active speaker. • Make sure you are not overdriving the speaker drivers. Turn down your audio source device. You may want to turn down the volume knob on the active speaker also. • Make sure the audio source signal is providing a clean signal. • Make sure the cable between the audio source and the active speaker is properly seated.
Bluetooth device won’t pair with the T1E+	<ul style="list-style-type: none"> • Make sure your Bluetooth device is in range (to be sure, place your BT device within 5 feet of the T1E+) • Make sure another Bluetooth device does not already have connection with the T1E+. To make sure all BT connections are disconnected hit the “Pair-Prog” button on the back of the active speaker or hit enable followed by the BT Pair button on the remote, then try to pair your device again. • Make sure the T1E+ Bluetooth interface is in the pairing mode by either pressing the “Pair-Prog” button on the back of the active speaker or by using the remote and pressing the “Enable” key followed by the “BT Pair” key. Either of these actions will place the T1E+ Bluetooth interface in the pairing mode for 2 minutes. • If you have trouble pairing or connecting, we recommend turning off Bluetooth on all nearby devices except for the one you want to use.
No audio from the optional subwoofer	<ul style="list-style-type: none"> • Make sure the RCA cable between the active speaker subwoofer output and the subwoofer’s input are properly seated. • Make sure the subwoofer is plugged in and switched on. • Make sure the subwoofer volume is turned up. • If you need more volume on the input to the subwoofer, you can adjust the subwoofer out from the T1E+ using the remote (see the section regarding the remote control commands). You can also double the level of the subwoofer output by using a cable that has a single RCA connector on one end with two RCA connectors on the other. Just plug the single RCA connector into the subwoofer output on the T1E+ and the two RCA connectors on the other end to the Left and Right inputs on the subwoofer. Since subwoofers sum the signals received on the Left and Right inputs this will effectively double the subwoofer input level.
Sound drops out momentarily	<ul style="list-style-type: none"> • This is usually an indication that one of the many automatic protection circuits is engaging to protect the speakers from permanent damage as a result of playing the speakers louder than they can safely play. Turn either the active speaker volume or the audio source volume down slightly until this stops. If you need to play louder than the T1E+ speakers allow, you should consider adding a subwoofer to your system. • If you are using one of the digital inputs this could also be an indication that your digital signal is being interrupted. You may consider changing the digital cable. • If you are using the Bluetooth input this could be an indication that your Bluetooth sending device is on the edge of being out of range.

WARRANTY

All speakers built by Vanatoo carry a 3-year limited non-transferrable warranty beginning from the date of purchase. There is no requirement for you to register your product.

The warranty covers all defects in material and workmanship with the following exceptions:

- Damage caused by improper installation or adjustment
- Damage caused by lightning or power surges
- Damage caused by accident, unreasonable use, or neglect
- Damage caused by an act of God
- Damage caused by excessive moisture
- Damage from failure to follow instructions contained in the Owner's Manual
- Damage from repairs performed by someone not authorized by Vanatoo
- Any unit on which the serial number has been effaced, modified, or removed
- Damage occurring during shipment, other than that arranged by Vanatoo
- Units which have been altered or modified in design, appearance or construction

This warranty covers only the actual defects within the product. It does not cover costs of installation, removal or setup of the product at the customer's site.

During the warranty period, Vanatoo will, at its option and within a reasonable amount of time, either repair or replace defective parts to restore the unit to equivalent to new in performance and reliability. The customer will be responsible for shipping or transportation charges to return the defective product to Vanatoo. It is recommended that the customer retain all the original shipping materials to assure safe transport of the product should it need to be sent back. It is recommended that the customer insures the shipment in case the carrier damages the product in shipment. Vanatoo cannot be responsible for any shipping damage due to improper packing of return products. Vanatoo will be responsible for all shipping charges associated with shipping the product back to the customer at any US address once the defect has been corrected.

If repairs are necessary which are not covered by this warranty, or if a unit is examined and is found to not be in need of repairs, the customer will be charged for the repairs and/or the examination. If non-warranted repairs are needed, Vanatoo will notify the customer of the estimated cost and ask for authorization to perform said repairs. In the case that the product repair is not under warranty, the customer will be charged for any shipping charges associated with shipping the product back to the customer.

If you have any questions about your warranty coverage or you think you may need service, email the Vanatoo Authorized Service Center at: support@vanatoo.com or visit our website at vanatoo.com for additional contact information. We will do everything we can to answer your questions and resolve any issues as quickly as possible.

This Limited Warranty is not transferrable. THE MAXIMUM LIABILITY OF VANATOO SHALL NOT EXCEED THE ACTUAL PURCHASE PRICE PAID BY THE CUSTOMER FOR THE PRODUCT. IN NO EVENT SHALL VANATOO BE LIABLE FOR SPECIAL, INCIDENTAL, CONSEQUENTIAL OR INDIRECT DAMAGES.

FCC COMPLIANCE STATEMENT

This device complies with Part 15 of the FCC Rules. Operation is subjected to the following two conditions: (1) this device may not cause harmful interference, and (2) this device must accept any interference received, including interference that may cause undesired operation. This equipment has been tested and found to comply with limits for a Class B digital device, pursuant to Part 15 of the FCC rules. These limits are designed to provide reasonable protection against harmful interference in residential installations. This equipment generates, uses, and can radiate radio frequency energy, and if not installed and used in accordance with the instructions, may cause harmful interference to radio communications. However, there is no guarantee that interference will not occur in a particular installation. If this equipment does cause interference to radio or television equipment reception, which can be determined by turning the equipment off and on, the user is encouraged to try to correct the interference by one or more of the following measures:

- Reorient or relocate the receiving antenna.
- Move the equipment away from the receiver.
- Plug the equipment into an outlet on a circuit different from that to which the receiver is connected.
- Consult the dealer or an experienced radio/television technician for additional suggestions.

⚠ WARNING: FCC Regulations state that any unauthorized changes or modifications to this equipment not expressly approved by the manufacturer could void the user's authority to operate this equipment.

This Class B digital apparatus complies with Canadian ICES-003. Cet appareil numérique de la classe B est conforme à la norme NMB-003 du Canada.

Acknowledgements

"Vanatoo" is a registered trademark, "Vanatoo Technology Serving Art" logo and "Transparent One Encore Plus" are trademarks of Vanatoo LLC

TOSLINK is a registered trademark of Toshiba Inc.

D2Audio is a registered trademark of Intersil.

THIS DOCUMENT CONTAINS INFORMATION THAT IS SUBJECT TO CHANGE WITHOUT NOTICE. For the most recent version, please visit the support page at our website: vanatoo.com

No part of this publication may be reproduced or transmitted in any form or by any means, electronic or mechanical, including but not limited to photocopying, recording, information retrieval systems, or computer network without the written permission of Vanatoo.

Copyright 2023 Vanatoo LLC. All rights reserved

Contact Us

Phone

1-855-771-1161

Email

support@vanatoo.com

Website

vanatoo.com